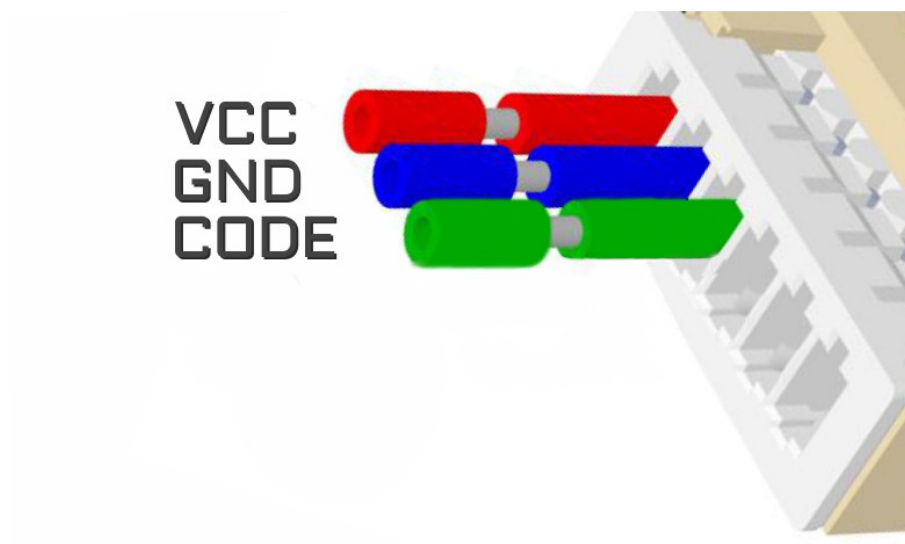


[See all emulators](#)**Program****Use****Honda**

- Honda: Accord, CRV, Civic and other (production year 1999 - 2002)

[See all emulators](#)

Wiring colour codes



The LED behavior

diagnostic mode - it flashes every second

adjusting to the ECU – flashing 0,1 sec

after adjusting it lights constantly and blinks every other second

[See all emulators](#)

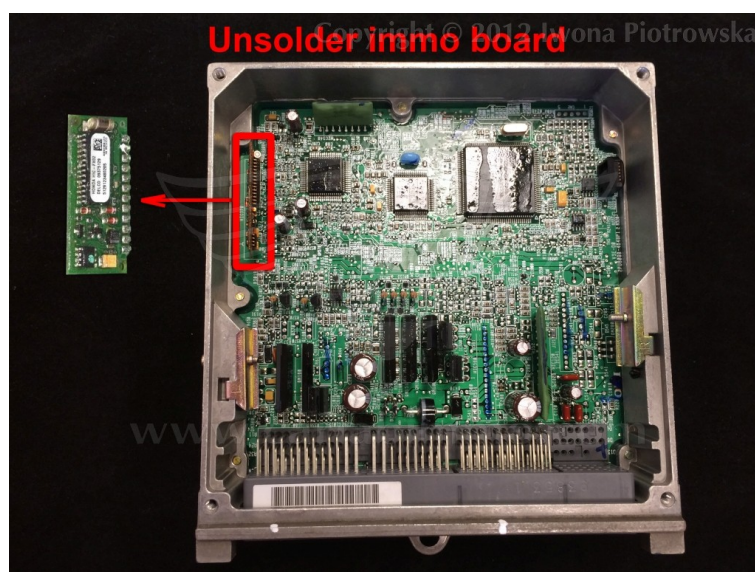
Honda

USE

**Honda: Accord, CRV, Civic and other
(production year 1999 - 2002)**

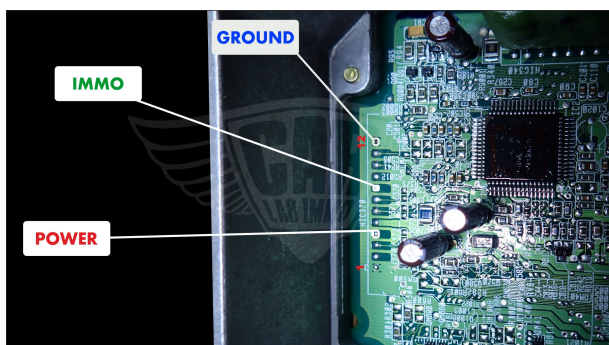


The emulator only works with ECU that has got immo board equipped with 28-pin processor with a label



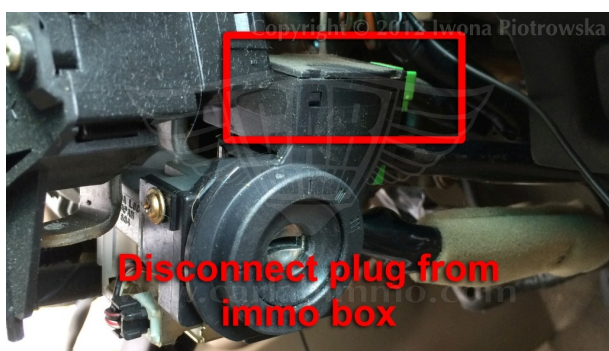
Unsolder this immo board as shown in the picture above

See all emulators



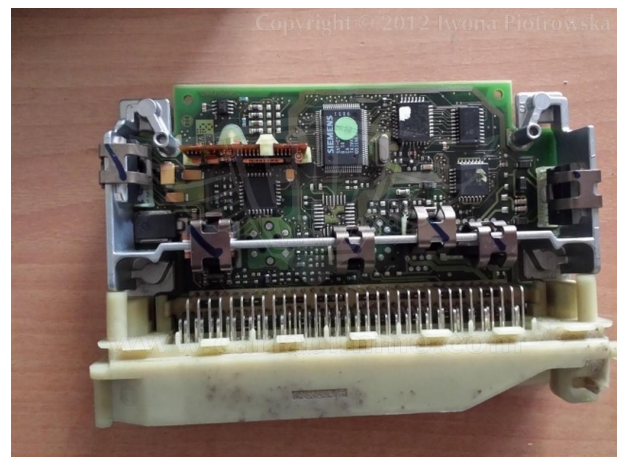
Example connection diagram

Before starting the car, disconnect the plug from immo box!!!



[See all emulators](#)

ECU Bosch M4.6.1
0 261 204 830
Honda Accord 1.6i 1999 year



Warning!!!

Due to possible construction changes of cars, check signals with multimeter in the ECU plug.

[See all emulators](#)

All rights reserved.

Unauthorized copying, hiring, lending, public performance will be punished!

We state that we are the only authentic authors of this manual. We possess copyright of this publication. Any trials of unauthorized copying, hiring, quoting prohibited!!! Both service and advertisement constitute copyright and they are the subject to the protection in accordance with the Act from 4th Feb. 1994 on Copyright and Related Laws (Statute Book no. 24 position 93) and protection on the basis of the Act from 8th June 1993 on combating an unfair competition (Statute Book no. 47 position 211)

www.carlabimmo.com

Last updated 27.02.2019